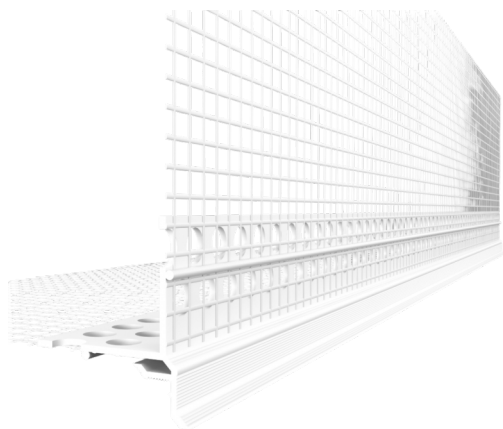


TECHNICAL SHEET 05.06.15-EN



JUBIZOL Drip bead light

Drip bead light

1. Description, usability

JUBIZOL DRIP PROFILE LIGHT is used to create a drip edge at transitions from vertical facade surfaces to horizontal ones. The profile prevents unwanted runoff of rainwater from facade surfaces to windows and doors. It can also be used for water drainage from the edges of balconies and terraces. It can also be used at the bottom edge of JUBIZOL facade systems where a base strip is not used for installing the insulation layer.

Features:

- Mesh welded to the profile - thermal bond
- Reinforcement of drip edges on the upper part of window and door openings
- Water drainage from the system, elimination of capillarity at the upper part of doors and windows, and potential cracks in the plaster during winter
- Invisible drip edge, strip under the plaster
- Reinforcement of drip edges and water drainage from balconies and terraces
- Protection of corners against mechanical damage
- Prevents hairline cracks
- Formation of perfectly straight edge

2. Packaging

- JUBIZOL DRIP PROFILE LIGHT (Piece 2.5 m, cardboard 125 m)

3. Technical data

Product name	JUBIZOL DRIP PROFILE LIGHT
Material	PVC, resistance to alkaline fields Glass fiber mesh in accordance with ETAG 004
Batten length	2500 mm
Plastic part width	21 mm

Mesh width	100 mm x 100 mm
Overlap	0/60 mm
Mesh attachment method	Installation with plastic slat - thermally welded (completely inert in contact with alkaline and temperature changes)

4. Installation

The drip profile is embedded into a thin layer of adhesive mortar, which is applied to the insulation layer in approximately 150 mm wide strips on both sides of the edge using a notched stainless steel trowel. The excess mortar mixture that squeezes through the reinforcing mesh on both sides of the drip edge should be smoothed out by gradually and evenly tapering it to a thickness of zero, and any remaining excess should be removed. If the bottom edge and the surface of the drip edge element facing the facade wall get smeared with adhesive mortar during this process, clean them immediately with a damp cloth. The facade mesh used to reinforce the rest of the facade surfaces must be extended over the drip profile, and then cut at a 45° angle right at the bottom edge of the drip profile using a knife. The facade mesh must completely cover the vertical part of the drip profile. This measure further reduces the likelihood of cracks forming above the drip profile.

For the display of the profile, see picture 001 in the appendix.

5. Instructions for safe use of the product

Safety handling instructions, first aid measures, fire protection measures, measures in case of accidental releases, special storage instructions, required personal protective equipment, waste handling instructions, special transport requirements, and other legally prescribed information are provided in the product's safety data sheet. In addition to these instructions, it is necessary to follow the guidelines and regulations for safety in construction, facade work, and painting when installing the product.

6. Storage, transportation conditions and durability

Packed in cardboard boxes. Store in a dry and covered area at a temperature of +5°C to +40°C. Transport in a horizontal position. Shelf life when stored in the original sealed and undamaged packaging: at least months.

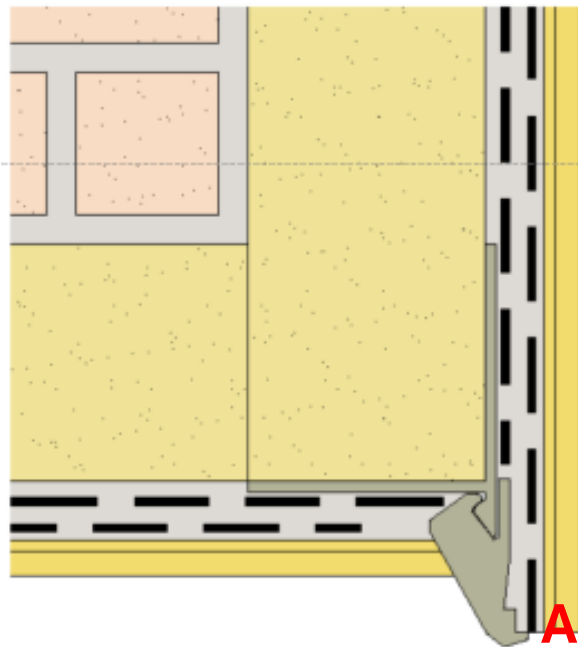
7. Other information

The technical instructions in this brochure are provided on the basis of JUB's experience and are given as a guideline for achieving the optimum results. JUB cannot accept any responsibility for the damage caused by incorrect selection of a product, incorrect use or unprofessional work.

Safety measures: Follow the instructions on the safety data sheet of the product.

This technical sheet supplements and replaces all preceding editions. JUB reserves the right to change and supplement data in the future.

Designation and date of issue: TDS 128/25-pek, 15.12.2025



001